

Yellow Wood Partners is a leading private equity firm focused on investing exclusively in consumer brands. Our philosophy is to bring a commercial approach to the companies in which we invest. We work collaboratively with management to help grow brands and achieve our collective goals. Our investor base is comprised of a small group of large sophisticated institutions and we are currently investing from our \$370 million second fund.

Taking the Road Less Traveled in Private Equity



Consumer Industry Focus

- Exclusive focus on consumer brands
- Specialize in growing entrepreneurial businesses
- Deep understanding of e-commerce, mass, DTC, drug, food, specialty, prestige, and club channels



Operational Expertise

- Dedicated operating partners assist management with functional areas: supply chain, e-commerce, operations, sourcing, sales, digital & traditional marketing, finance, and international expansion
- All senior Yellow Wood professionals have held operating roles in consumer businesses



Partnership Approach

- Concentrated approach of partnering with limited number of portfolio companies
- Devote resources and attention necessary to focus on key initiatives and drive growth

Investment Strategy and Criteria

Strategy

- Thematic, industry driven investments
- Buyouts and growth capital
- Majority and minority transactions
- Flexible investment structures
- Prefer to partner with strong management teams

Criteria

- Target equity investment between ~\$50-\$150+ million
- Size agnostic for add-on acquisitions
- Stable revenue and cash flow with high margin structure
- Potential for growth through top line and margin improvement initiatives

Sector Expertise



Beauty & Personal Care



Health & Wellness



Food & Beverage



Juvenile Products



Household



Outdoor & Recreation



Pet Care



Home Goods

Yellow Wood Investment Team

Dana Schmaltz	Partner	617.500.6341	dschmaltz@yellowwoodpartners.com
Tad Yanagi	Partner	617.500.6343	tyanagi@yellowwoodpartners.com
Joseph Atencio	Partner	617.500.6338	jatencio@yellowwoodpartners.com
Jennifer Pacini	Vice President	617.500.6344	jpacini@yellowwoodpartners.com
Andrew Nguyen	Vice President	617.500.6337	anguyen@yellowwoodpartners.com
Sarah Mascioli Ensslen	Vice President	617.500.6339	smensslen@yellowwoodpartners.com
Payton McVey	Senior Associate	617.500.6336	pmcvey@yellowwoodpartners.com
Robert Staub	Associate	617.500.6342	rstaub@yellowwoodpartners.com
Amrutha Mandalap	Associate	617.500.6335	amandalap@yellowwoodpartners.com
Jordan Friedlander	Associate	617.500.6333	jfriedlander@yellowwoodpartners.com

Investment and Operating Experience



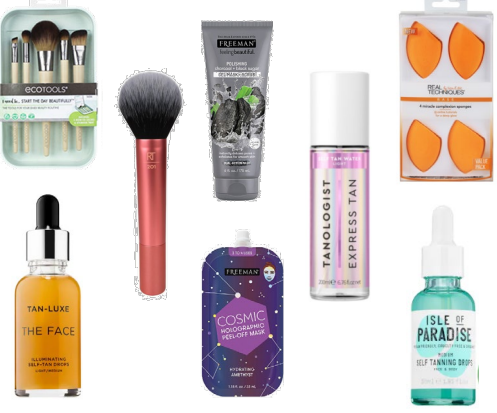
Dr. Scholl's is the leading provider of insoles and orthotics

- Develops footcare products designed to help consumers achieve healthy, active, and pain-free lifestyles at an affordable price point
- Dominant market position in the footcare category with 80%+ unaided brand awareness and #1 share in major retailers
- Yellow Wood acquired Dr. Scholl's through a carve-out from Bayer AG in November 2019, subsequently forming Scholl's Wellness Company

Actively looking for add-on acquisitions in health, wellness, and OTC



FUTURE BEAUTY LABS



Paris Presents is a leading cosmetic accessories and skincare business, which is composed of Real Techniques, EcoTools, Freeman Beauty, Isle of Paradise, Tan Luxe and Tanologist

- Real Techniques creates the #1 best-selling beauty product, the miracle complexion sponge
- EcoTools creates vegan and natural cosmetic, bath, and skincare accessories from recycled materials
- Freeman Beauty sells high-performing skincare products, inspired by nature, and is the #1 facial mask brand in the mass channel
- Future Beauty Labs houses three innovative self tanning brands
- Yellow Wood acquired Freeman Beauty in August 2017, Paris Presents (Real Techniques & EcoTools) in August 2018 and Future Beauty Labs in May 2020. The businesses were merged upon closing

Actively looking for add-on acquisitions in beauty and personal care



PDC Brands is a global beauty, personal care, and wellness company marketing high quality products at accessible price points across the bath & body care, multi-cultural hair care, fragrances, cosmetic eyelash and nail categories

- Brands include Dr. Teals, Cantu, Eylure, Body Fantasies, Bod Man, Me! Bath, Calgon, Bodycology, Elegant Touch, and Salon Systems
- Completed five accretive add-on acquisitions
- Grew revenues over 4x and increased EBITDA by over 5x during investment period
- Partnered with management to acquire PDC Brands in September 2012
- Yellow Wood completed the sale of PDC Brands to CVC Capital Partners in June 2017 for \$1.425 billion

Additional Brand Experience*



*Includes companies that Yellow Wood investment professionals have been involved with in various capacities prior to joining Yellow Wood. References made to a particular investment should not be considered a recommendation of any investment, or an indication that any investment was successful. There can be no assurance that YW will be able to make similar investments in the future. Some of these brands have been acquired by YW's portfolio companies